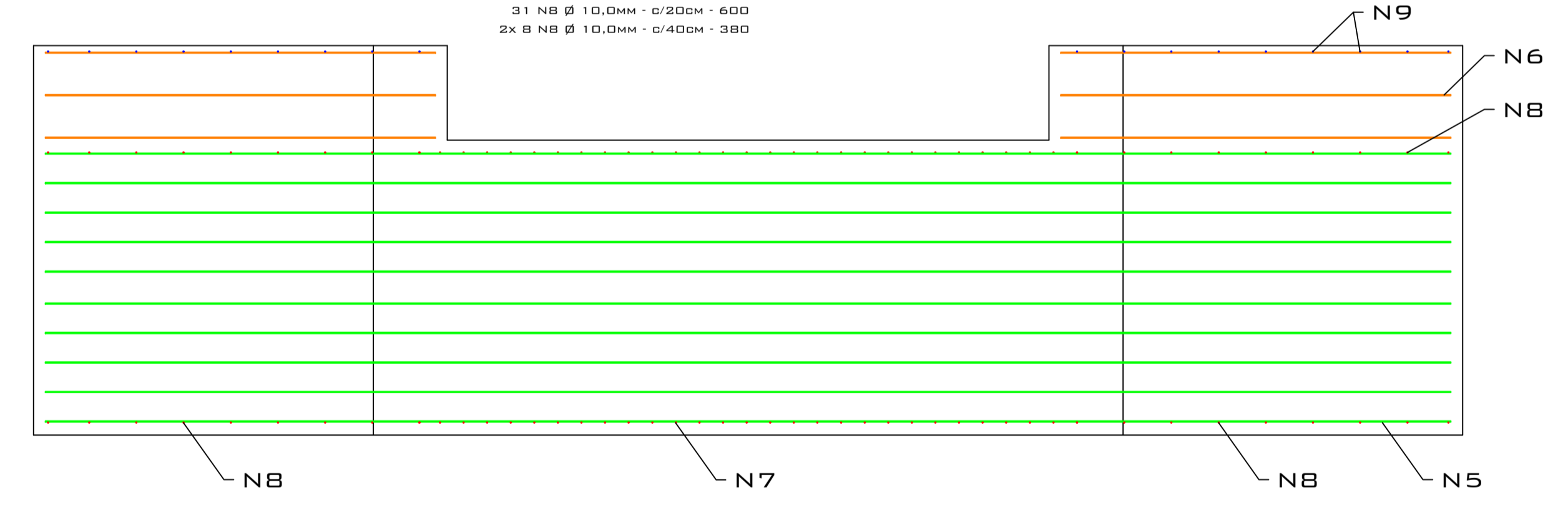
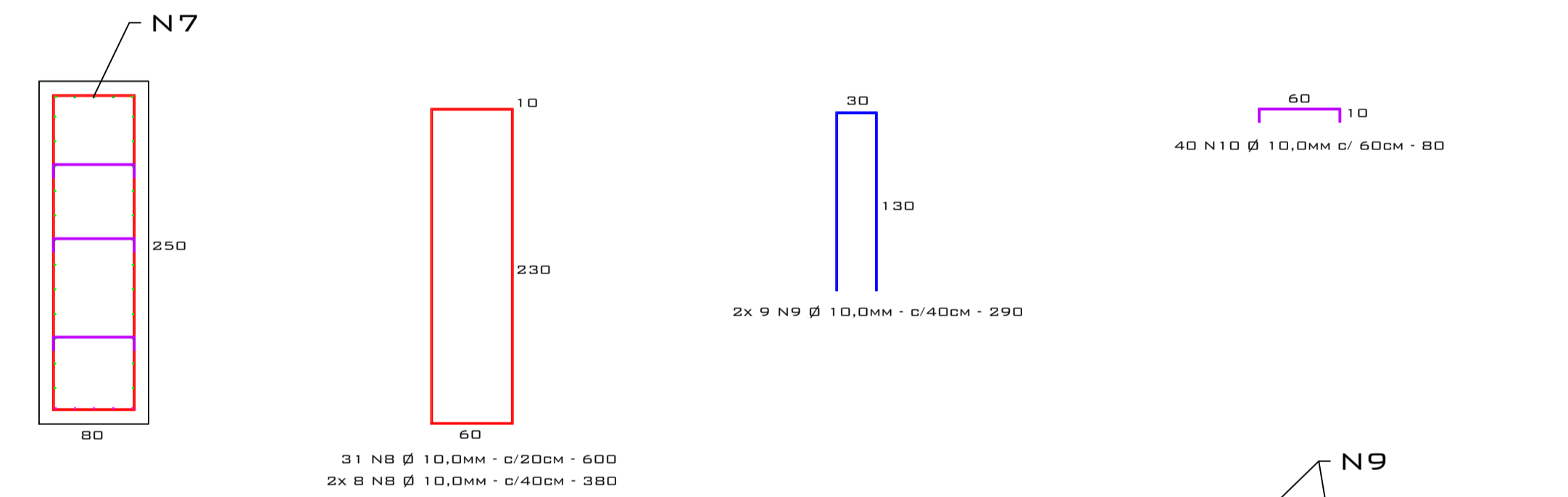
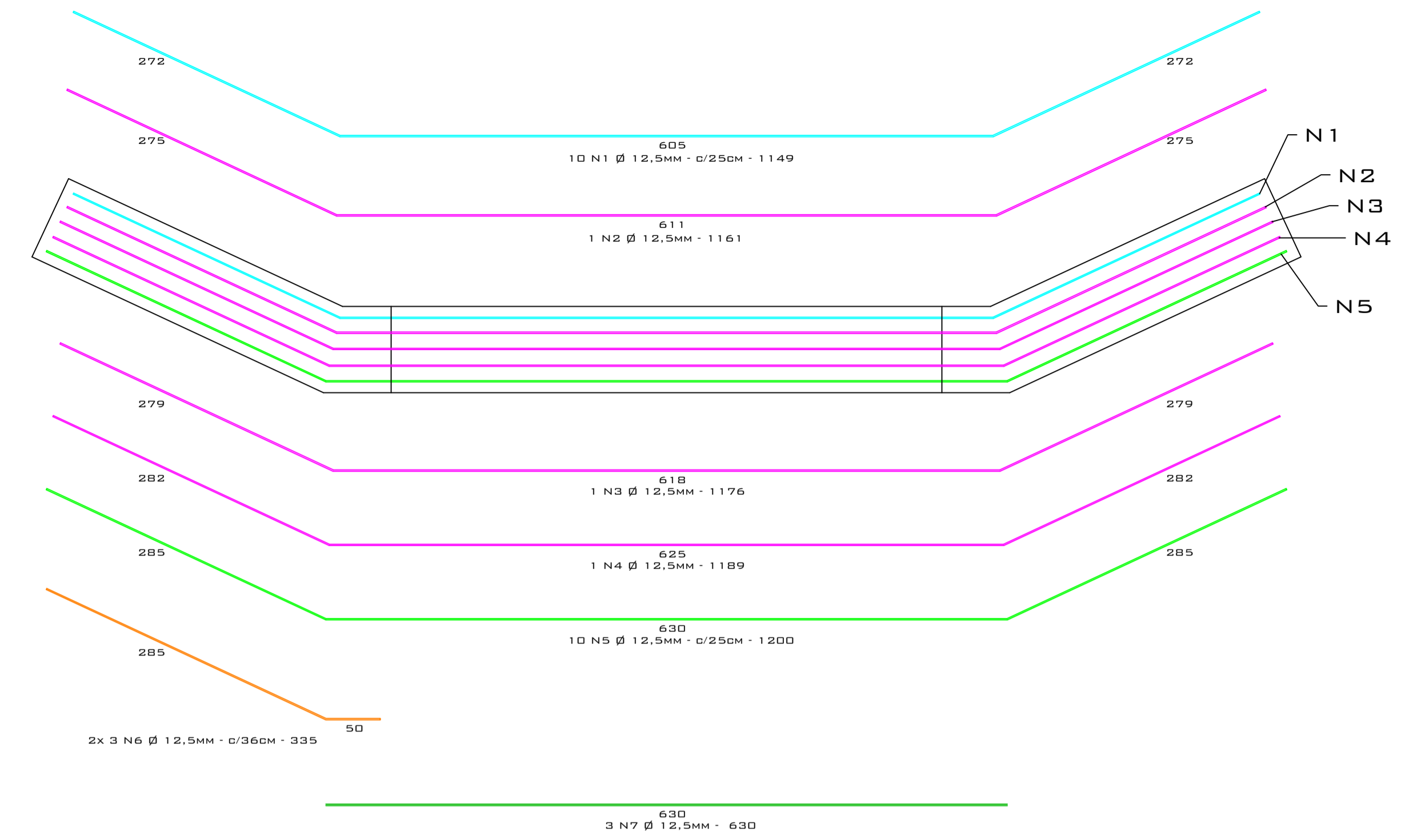
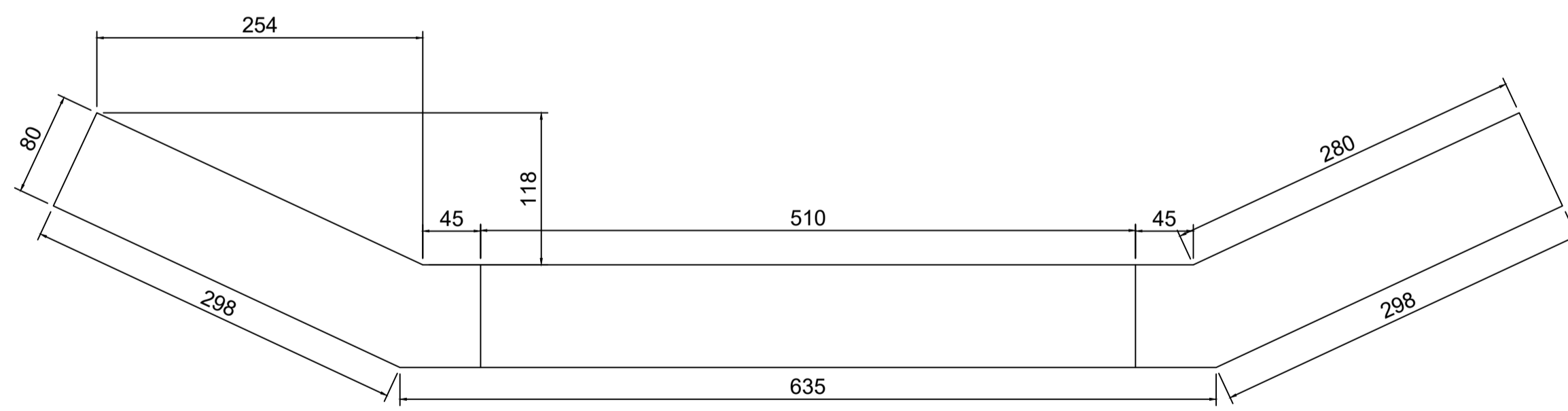
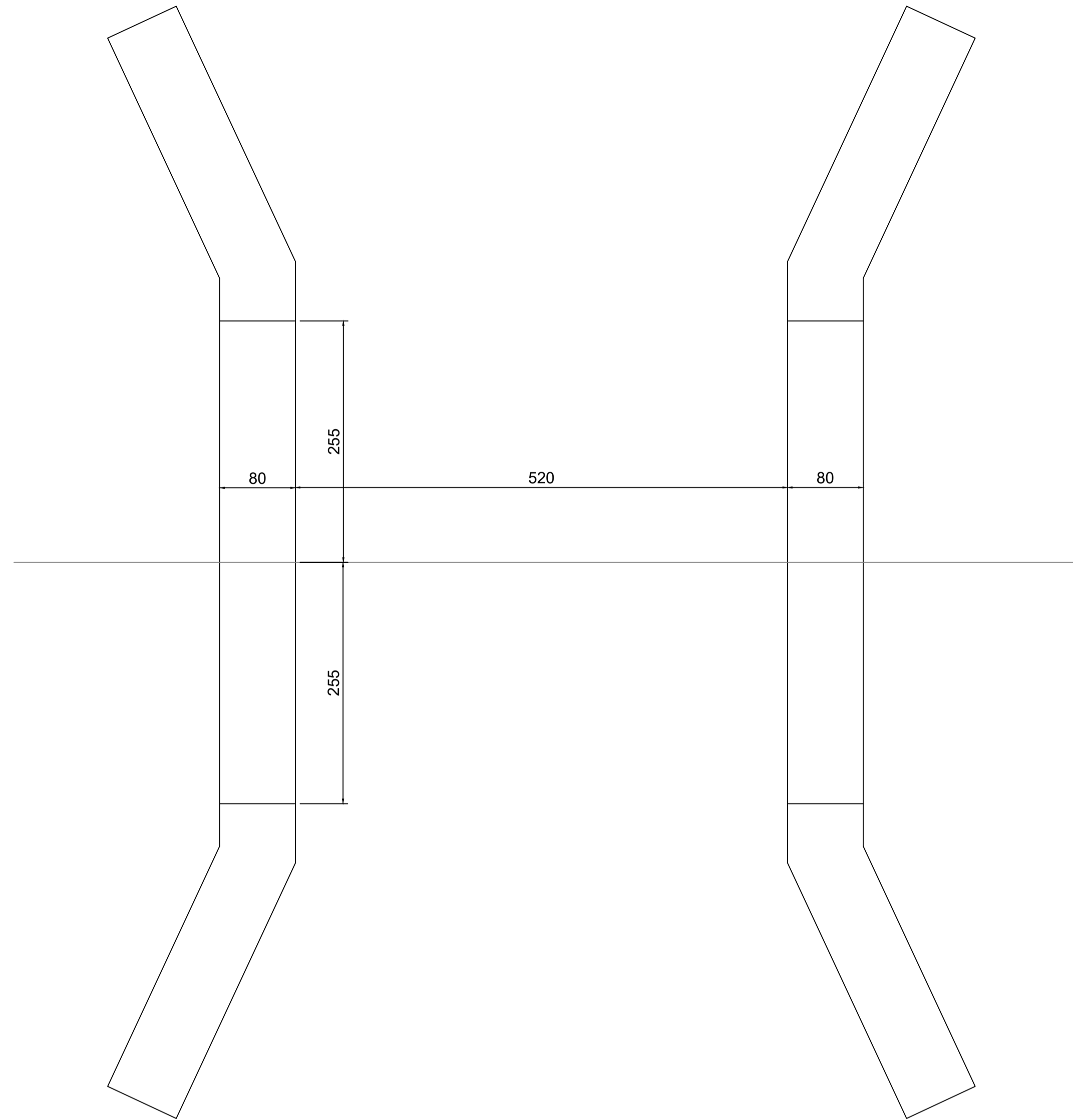


# SÃO PEDRO 1



	Ø	QTDADE	COMP.	COMP TOTAL	KG	KG + 10%
N1	12,5	20	1149	22980	221,3	243,4
N2	12,5	2	1161	2322	22,4	24,6
N3	12,5	2	1176	2352	22,6	24,9
N4	12,5	2	1189	2378	22,9	25,2
N5	12,5	20	1200	24000	231,1	254,2
N6	12,5	12	335	4020	38,7	42,6
N7	12,5	6	630	3780	36,4	40,0
N8	10	94	600	56400	348,0	382,8
N9	10	36	290	10440	64,4	70,9
N10	10	80	80	6400	39,5	43,4

CONCRETO 30 Mpa = 56,57 m³

**Projeto PONTE INTERIOR - SÃO PEDRO 1**

**IPPUC**  
INSTITUTO  
DE PESQUISA E PLANEJAMENTO  
URBANO DE CAÇADOR

Referência  
CABECEIRAS PONTE SÃO PEDRO 1

LOCALIZ: 26°49'42.60"S - 51°3'12.24"O

FOLHA  
**PT01**

Data  
13 julho 2020

Responsável Técnico

\_\_\_\_\_

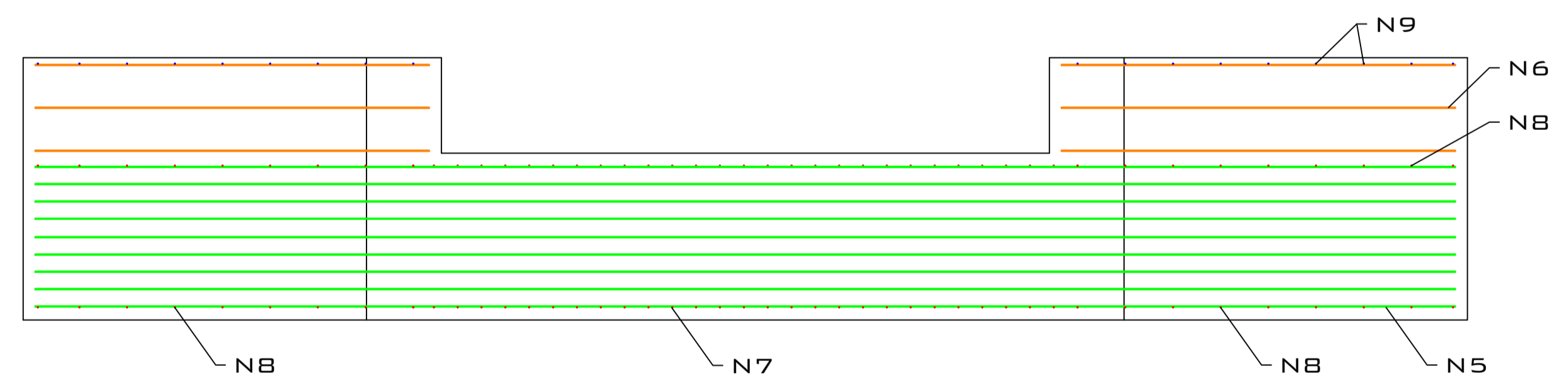
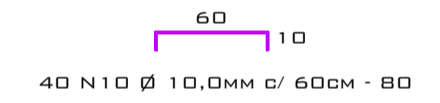
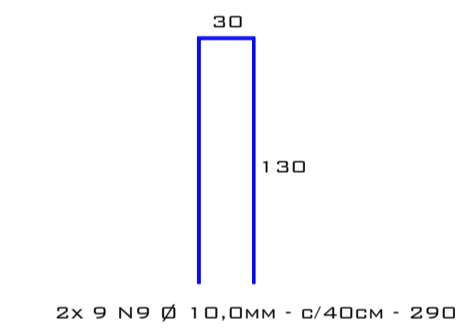
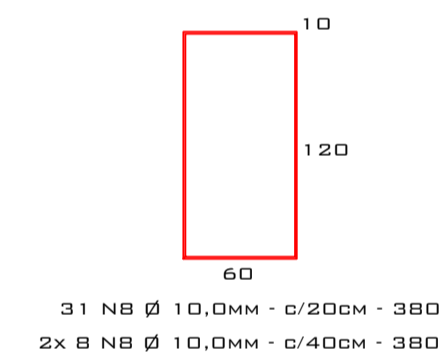
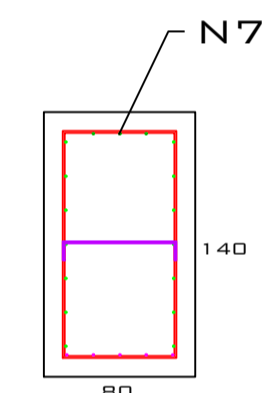
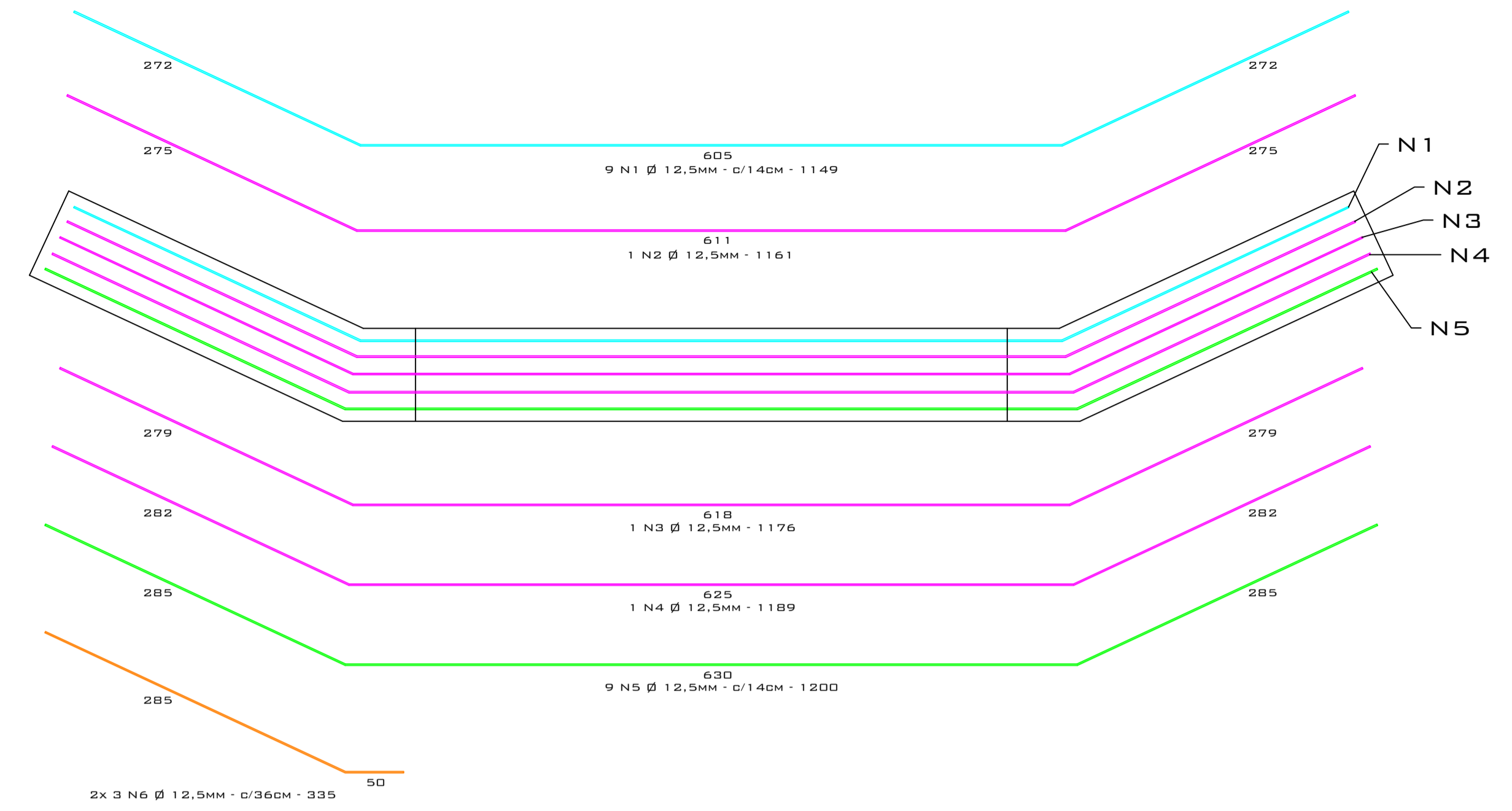
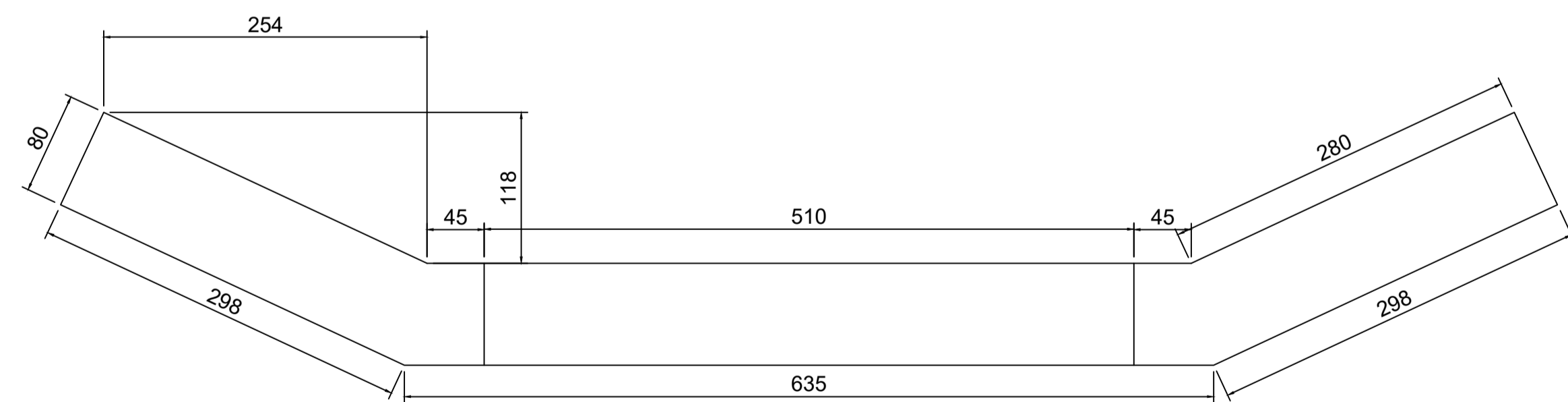
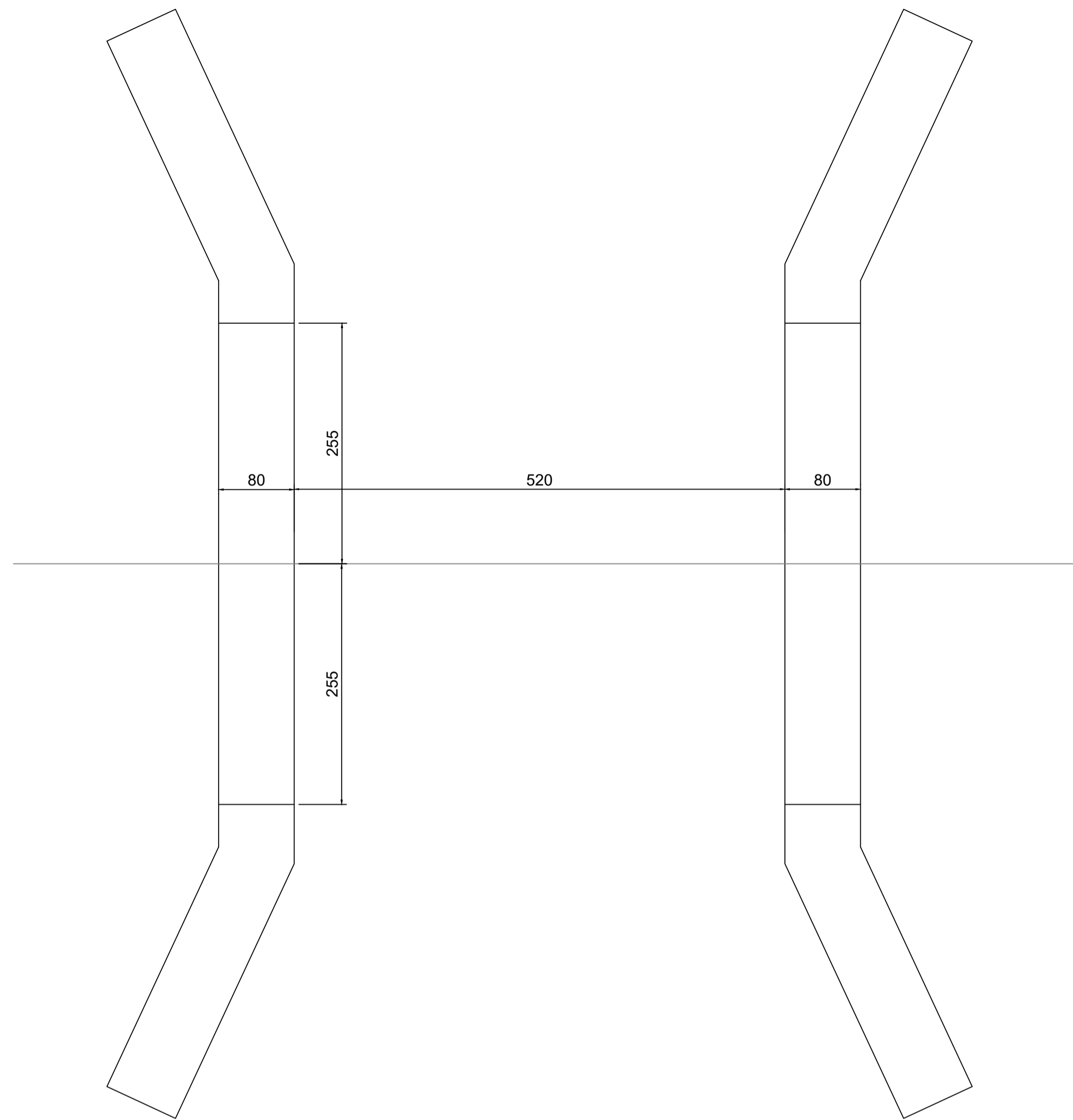
Área

Escala 1:40

Desenho EMERSON

Arquivo D:\Prefeitura\ Ponte Interior\Pontes 2020\PONTE SÃO PEDRO 2.dwg

# SÃO PEDRO 2



	Ø	QTD	COMP.	COMP TOTAL	KG	KG + 10%
N1	12,5	18	1149	20682	199,2	219,1
N2	12,5	2	1161	2322	22,4	24,6
N3	12,5	2	1176	2352	22,6	24,9
N4	12,5	2	1189	2378	22,9	25,2
N5	12,5	18	1200	21600	208,0	228,8
N6	12,5	12	335	4020	38,7	42,6
N7	12,5	6	630	3780	36,4	40,0
N8	10	94	380	35720	220,4	242,4
N9	10	36	290	10440	64,4	70,9
N10	10	80	80	6400	39,5	43,4

CONCRETO 30 Mpa = 35,54 m³

**Projeto PONTE INTERIOR - SÃO PEDRO 2**

**IPPUC**  
INSTITUTO  
DE PESQUISA E PLANEJAMENTO  
URBANO DE CAÇADOR

Referência  
CABECEIRAS PONTE SÃO PEDRO 2

LOCALIZ: 26°49'55.08"S - 51° 3'42.66"O

FOLHA  
**PT02**

Revisões  
REVISÃO DO PROJETO

REVISÃO 1

REVISÃO 2

REVISÃO 3

REVISÃO 4

Data  
13 julho 2020

Responsável Técnico

\_\_\_\_\_

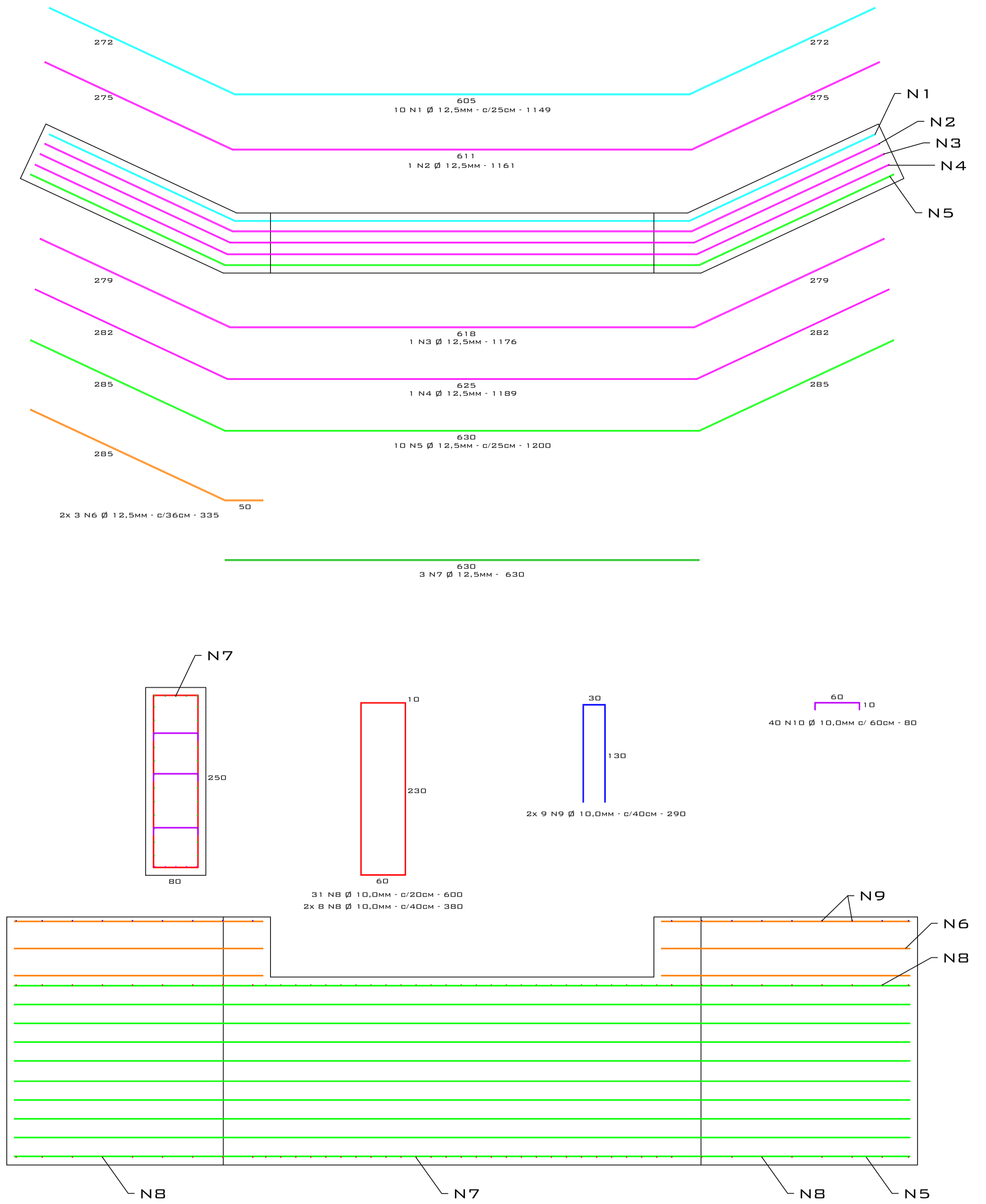
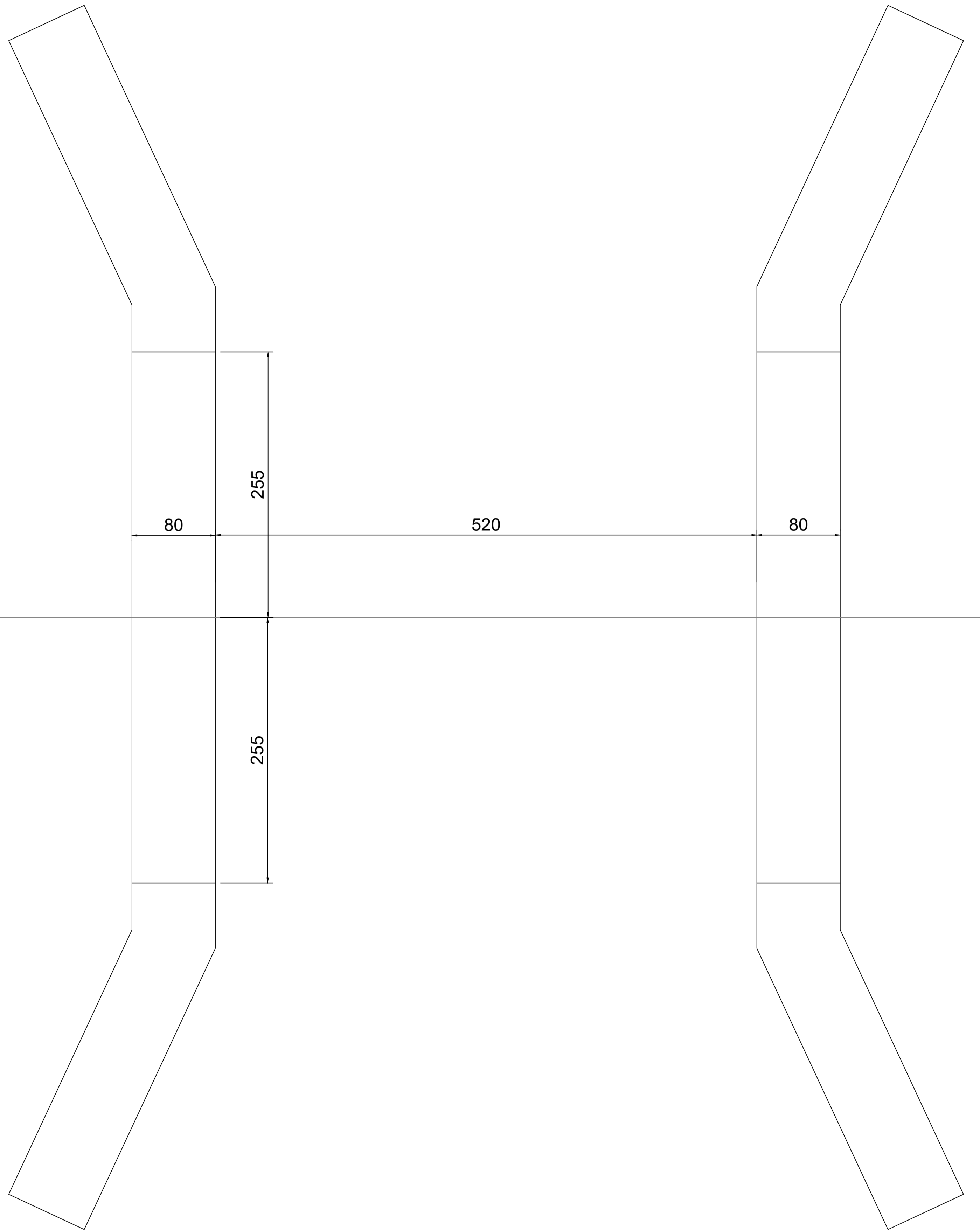
Área

Escala 1:40

Desenho EMERSON


Arquivo D:\Prefeitura\Ponte Interior\Pontes 2020\PONTE SÃO PEDRO 2.dwg

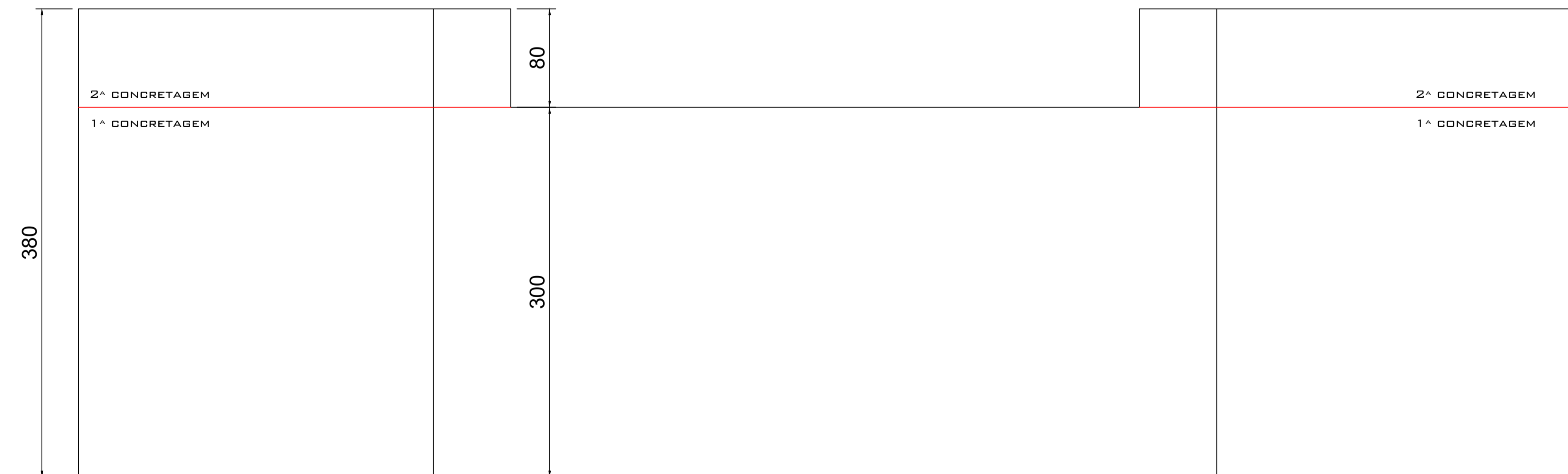
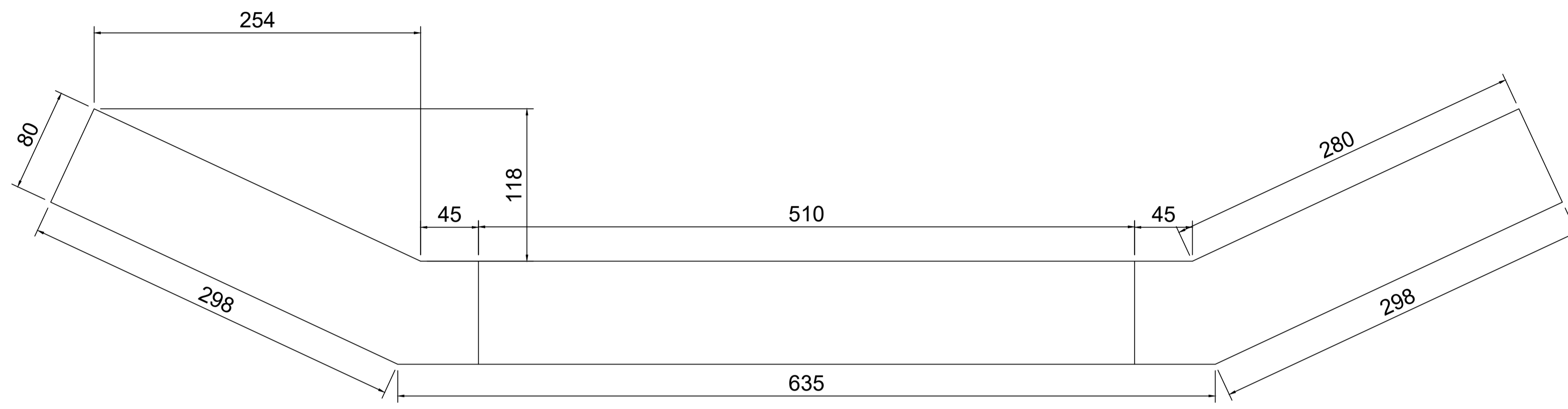
# CAIXA D'ÁGUA





	Ø	QTD	COMP.	COMP TOTAL	KG	KG + 10%
N1	12,5	24	1149	27576	265,6	292,1
N2	12,5	2	1161	2322	22,4	24,6
N3	12,5	2	1176	2352	22,6	24,9
N4	12,5	2	1189	2378	22,9	25,2
N5	12,5	24	1200	28800	277,3	305,1
N6	12,5	12	335	4020	38,7	42,6
N7	12,5	6	630	3780	36,4	40,0
N8	10	94	700	65800	406,0	446,6
N9	10	36	290	10440	64,4	70,9
N10	10	80	80	6400	39,5	43,4

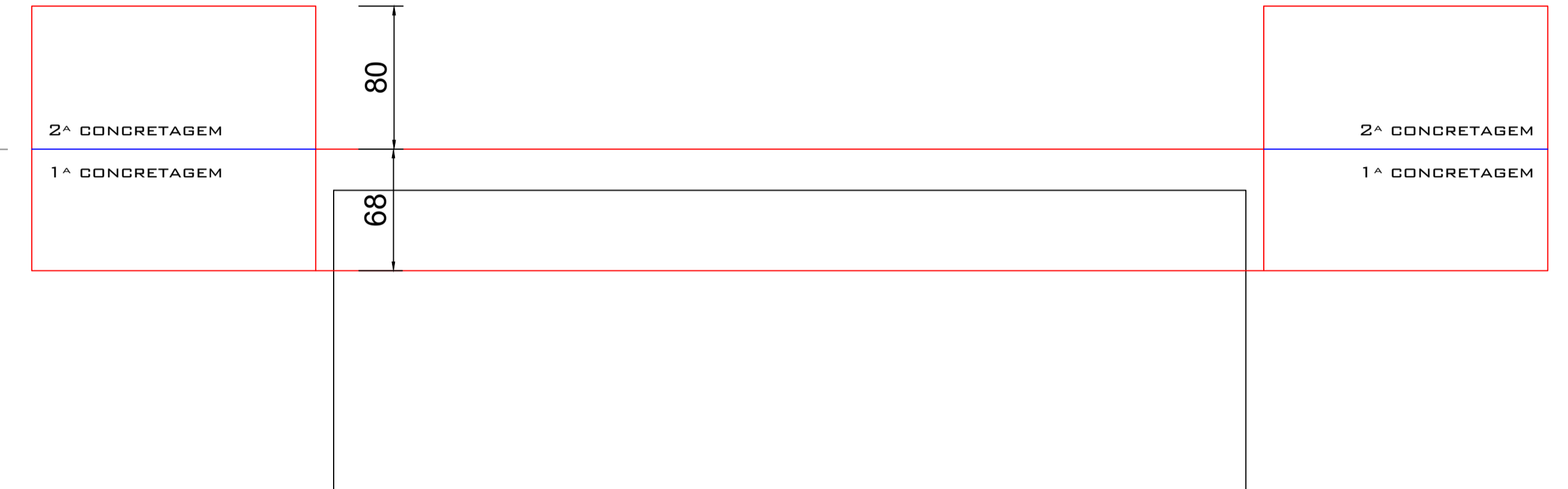
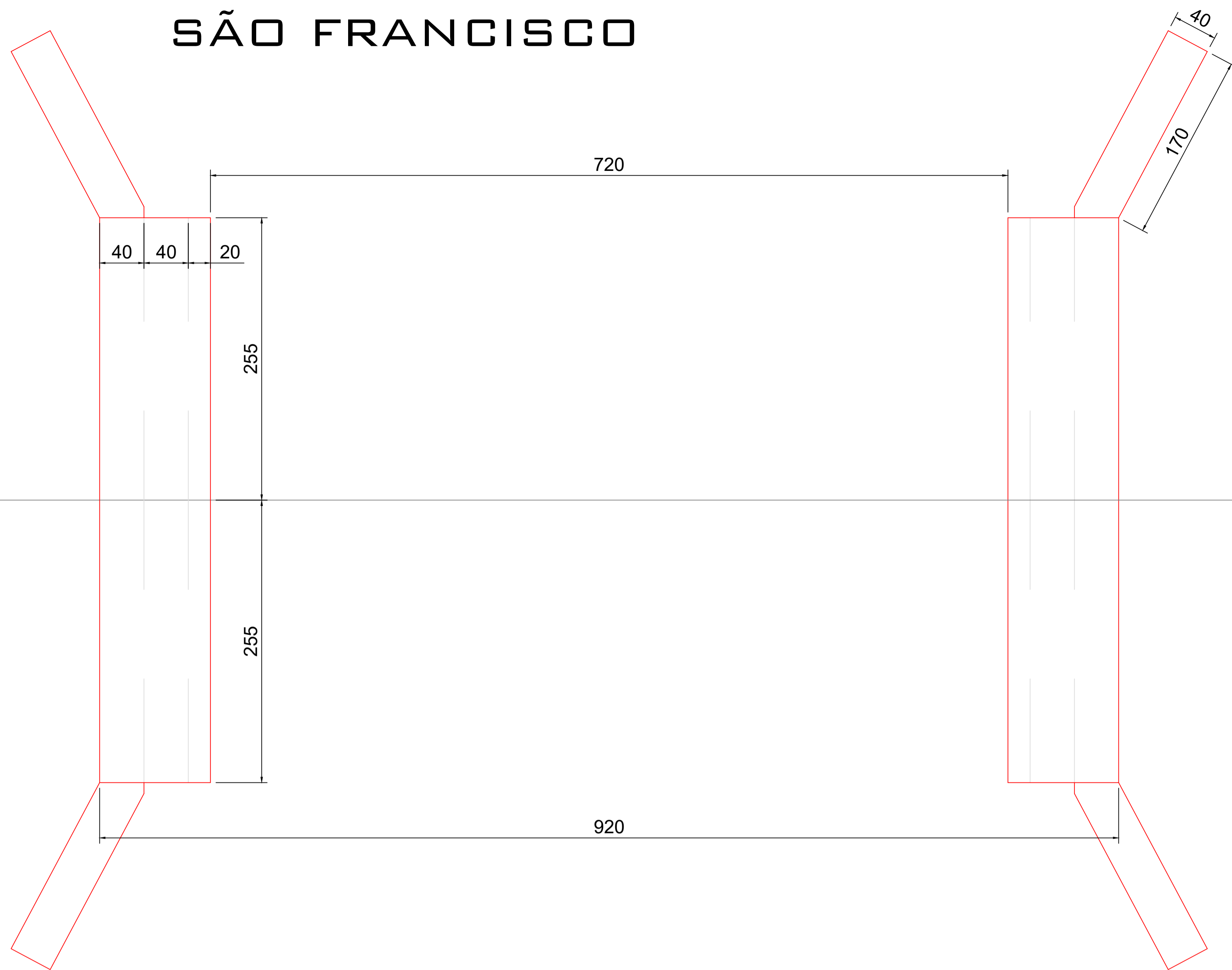
CONCRETO 30 Mpa = 66,13 m³

<b>Projeto PONTE INTERIOR - CAIXA D'ÁGUA</b>		Referência CABECEIRAS PONTE CAIXA D'ÁGUA	FOLHA <b>PT03</b>
		LOCALIZ: 26°50'30.48"S - 50°59'49.56"O	Data 13 julho 2020
Revisões REVISÃO DO PROJETO			
Responsável Técnico		Área Escala 1:40 Desenho EMERSON	Arquivo D:\Prefeitura\Ponte Interior\Pontes 2020\PONTE SÃO PEDRO 2.dwg

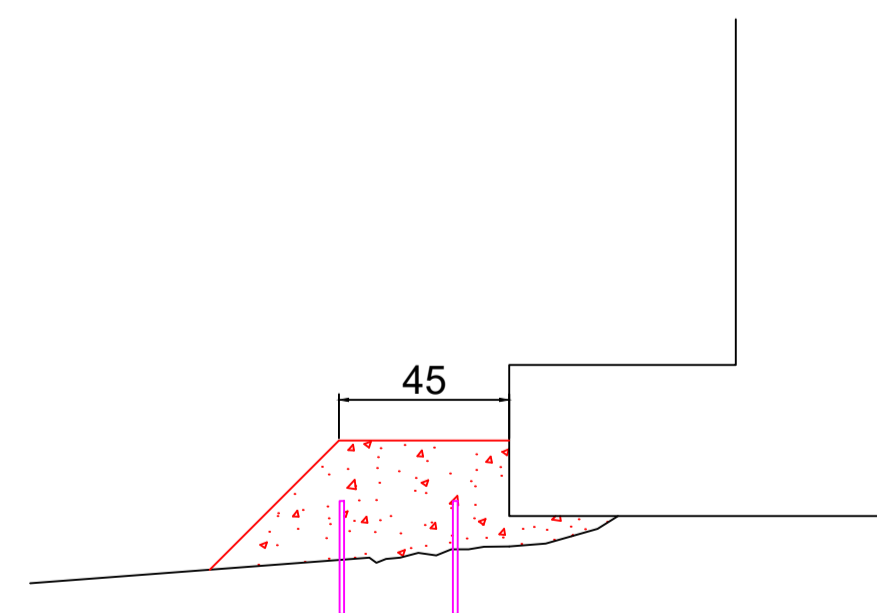
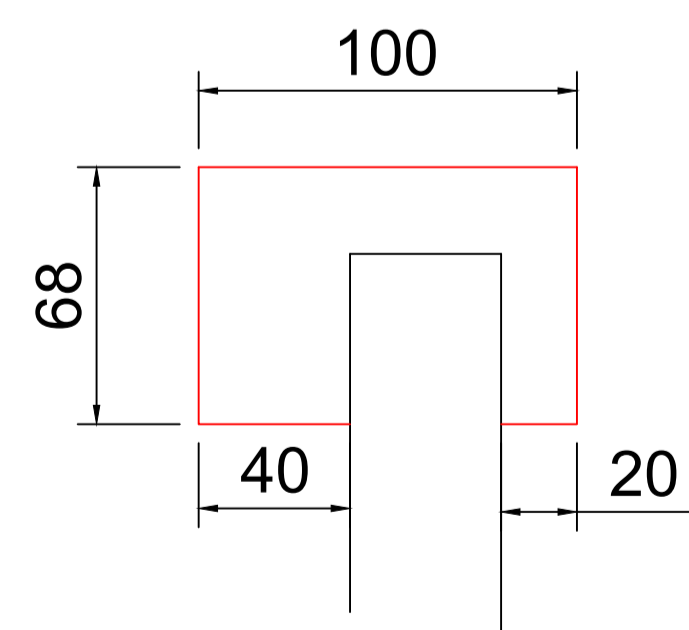


Projeto <b>PONTE INTERIOR - CAIXA D'ÁGUA</b>		FOLHA
	Referência CABECEIRAS PONTE CAIXA D'ÁGUA	<b>PT04</b>
	LOCALIZ: 26°50'30.48"S - 50°59'49.56"O	
Responsável Técnico	Revisões REVISÃO DO PROJETO	Data 13 julho 2020
	Área	
Escala 1:40		
Desenho EMERSON		
Arquivo	D:\Prefeitura\Pontes Interior\Pontes 2020\PONTE SÃO PEDRO 2.dwg	

# SÃO FRANCISCO



## PROTEÇÃO DAS CABEÇEIRAS EXISTENTES



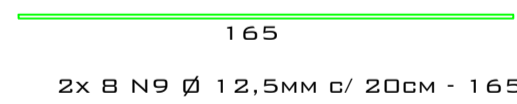
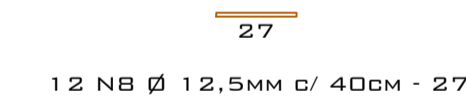
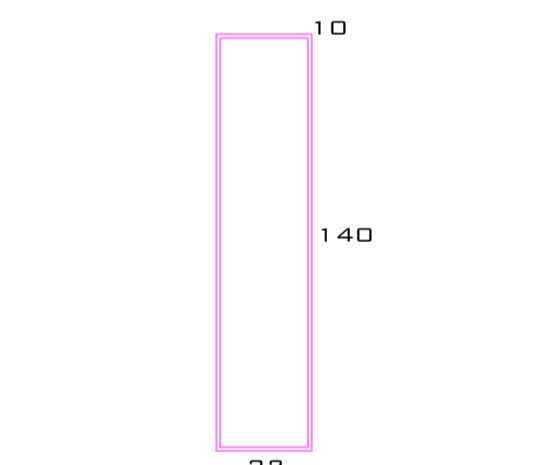
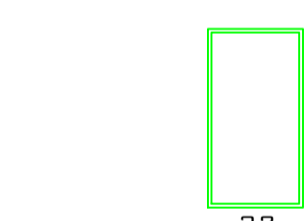
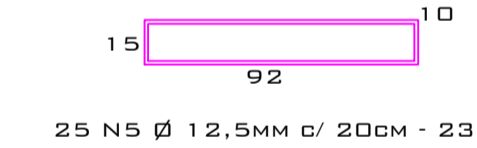
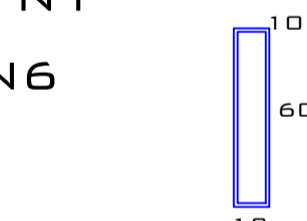
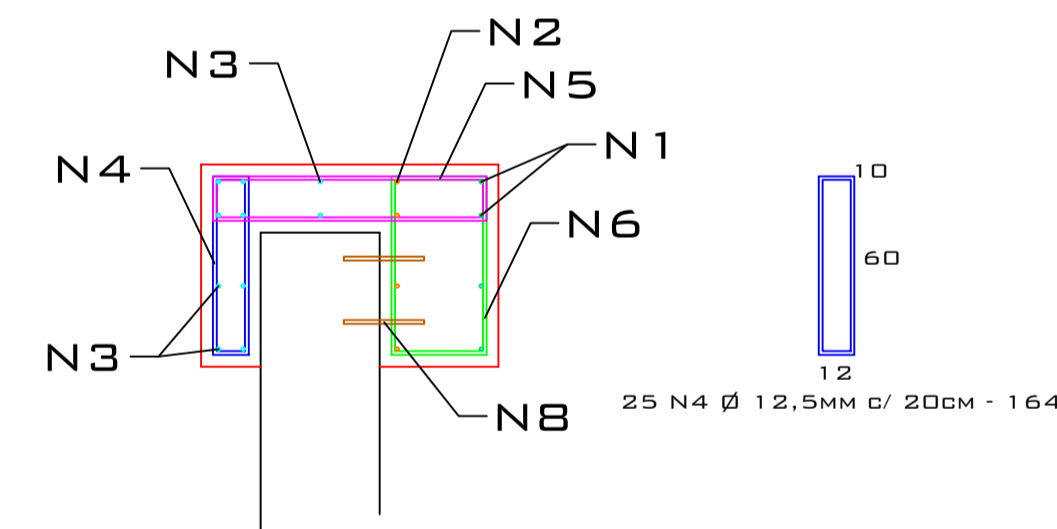
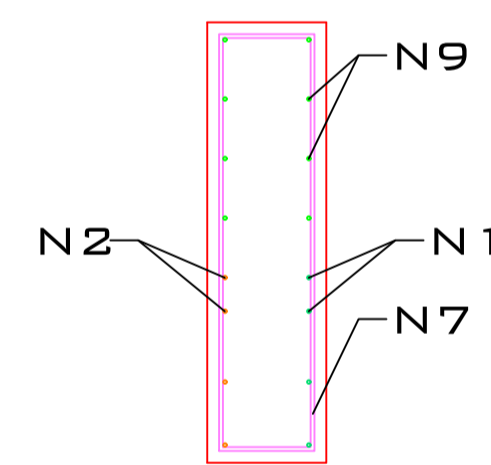
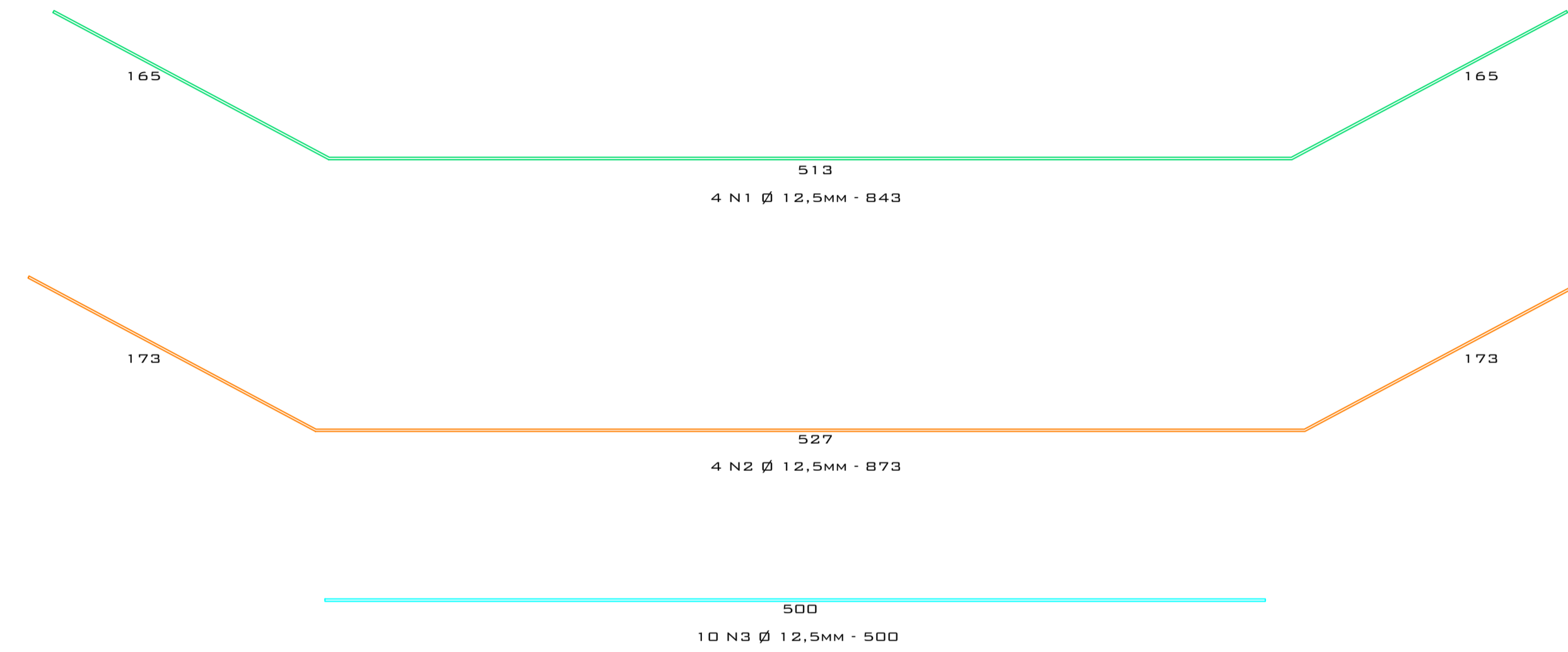
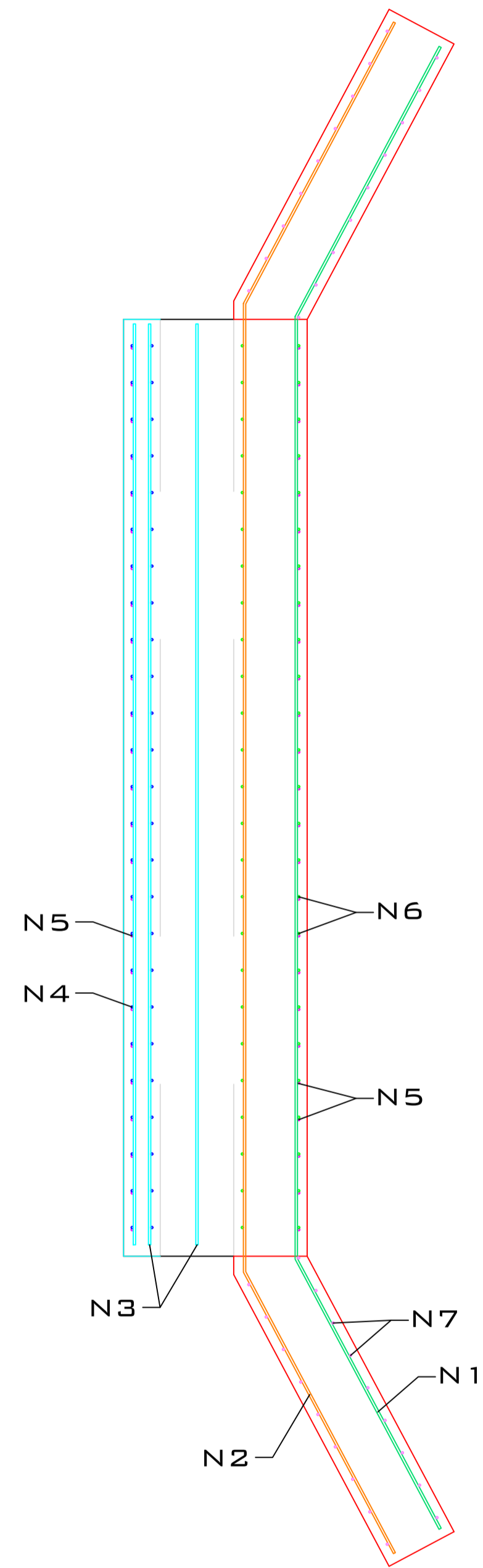
30 N 10 Ø 12,5 c/ 30cm - c=30



	Ø	QTDADE	COMP.	COMP TOTAL	KG	KG + 10%
N1	12,5	8	843	6744	64,9	71,4
N2	12,5	8	873	6984	67,3	74,0
N3	12,5	20	500	10000	96,3	105,9
N4	12,5	50	164	8200	79,0	86,9
N5	12,5	50	234	11700	112,7	123,9
N6	12,5	50	204	10200	98,2	108,0
N7	12,5	36	364	13104	126,2	138,8
N8	12,5	24	27	648	6,2	6,9
N9	12,5	32	165	5280	50,8	55,9
N10	12,5	30	30	900	8,7	9,5

CONCRETO 30 Mpa = 8,60 m³

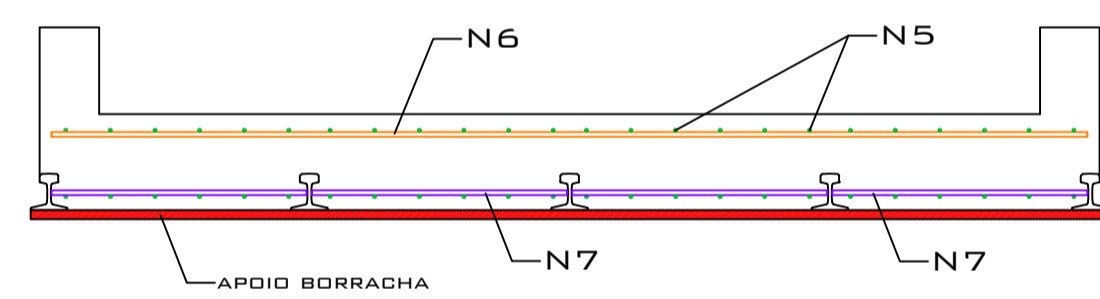
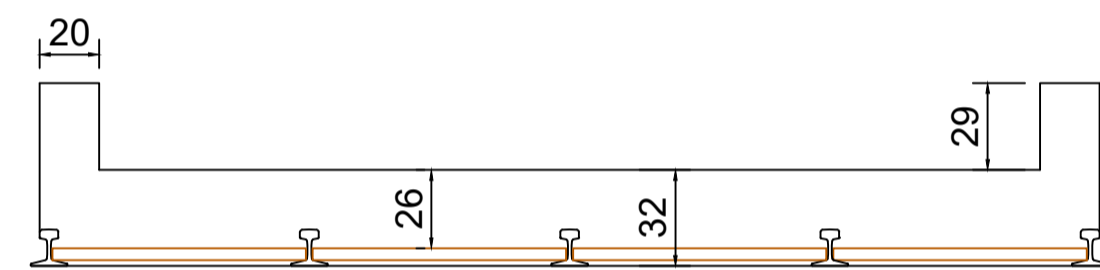
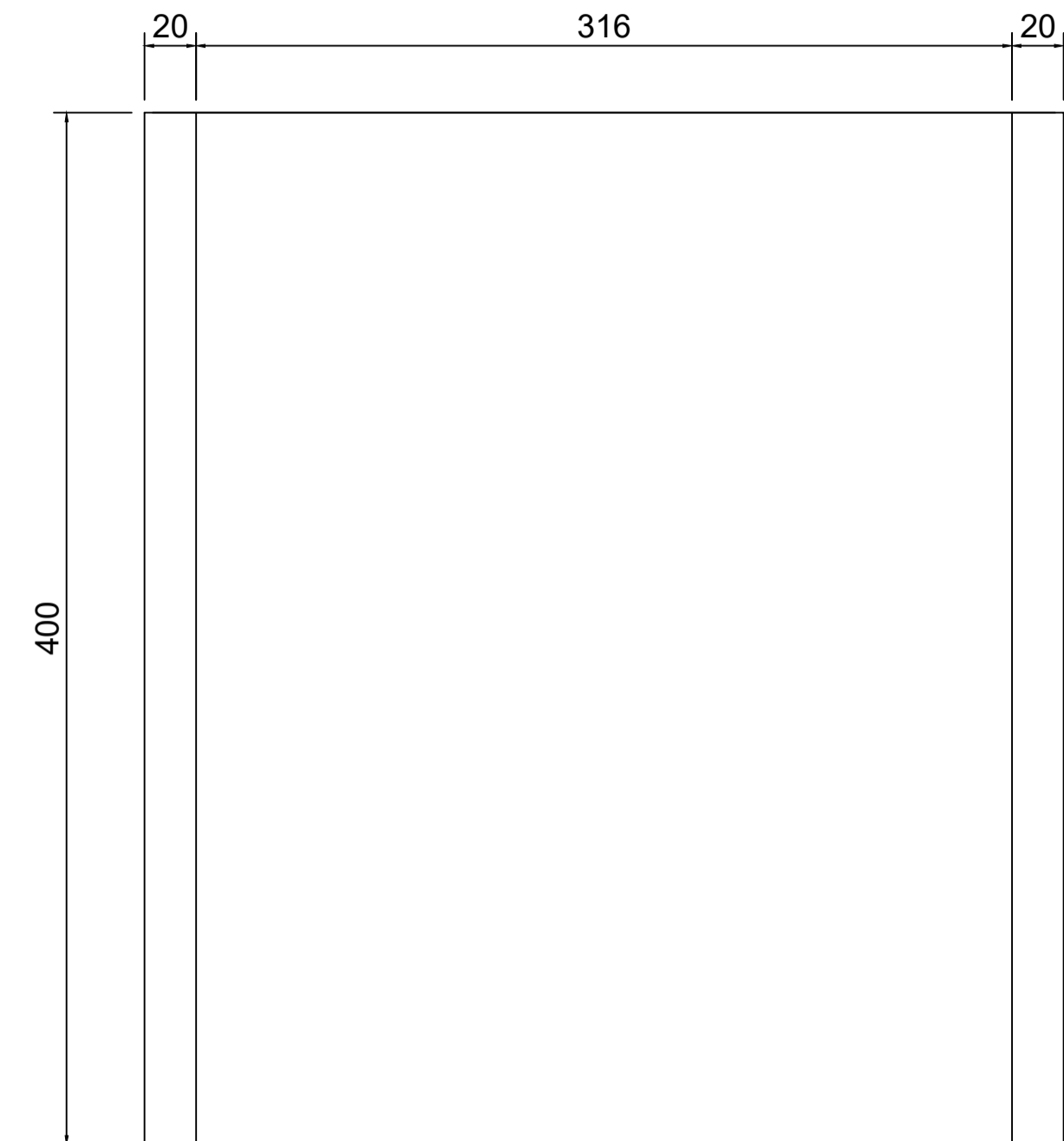
<b>Projeto PONTE INTERIOR - SÃO FRANCISCO</b>		Referência CABEÇEIRAS PONTE SÃO FRANCISCO PLANTA DE LOCAÇÃO LOCALIZ: 26°49'34.32"S - 51° 8'9.96"O	FOLHA <b>PT05</b>
	Revisões REVISÃO DO PROJETO - - - -	Data 13 julho 2020	
	Responsável Técnico _____	Área Escala 1:40 Desenho EMERSON Arquivo D:\Prefeitura\ Ponte Interior\Pontes 2020\PONTE SÃO PEDRO 2.dwg	





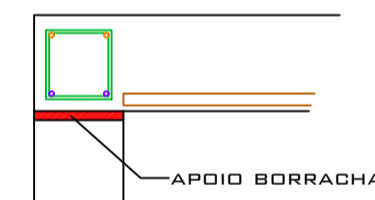
Projeto <b>PONTE INTERIOR - SÃO FRANCISCO</b>		
	Referência CABECEIRAS PONTE SÃO FRANCISCO PLANTA DE LOCAÇÃO	FOLHA <b>PT06</b>
	LOCALIZ: 26°49'34.32"S - 51° 8'9.96"O	Data 13 julho 2020
Revisões REVISÃO DO PROJETO	Área	
Responsável Técnico	Escala 1:40	
	Desenho EMERSON	
	Arquivo D:\Prefeitura\Pontes Interior\Pontes 2020\PONTE SÃO PEDRO 2.dwg	

# CERRO AZUL

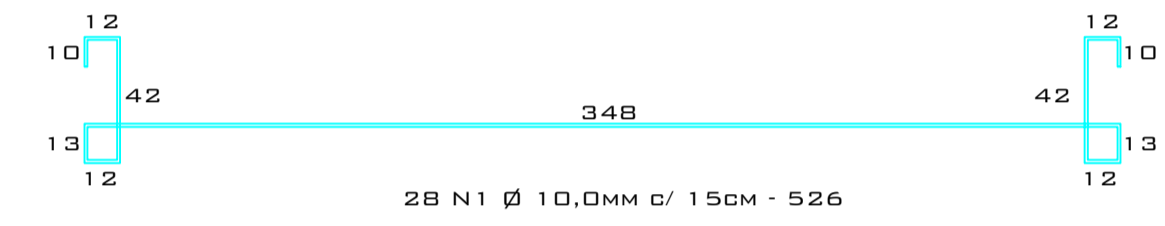


34B  
2x 2 N6 Ø 16,0MM - 34B

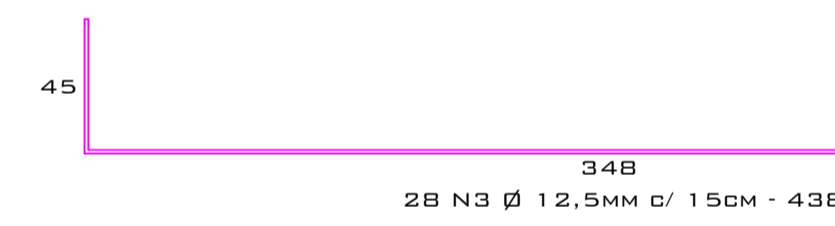
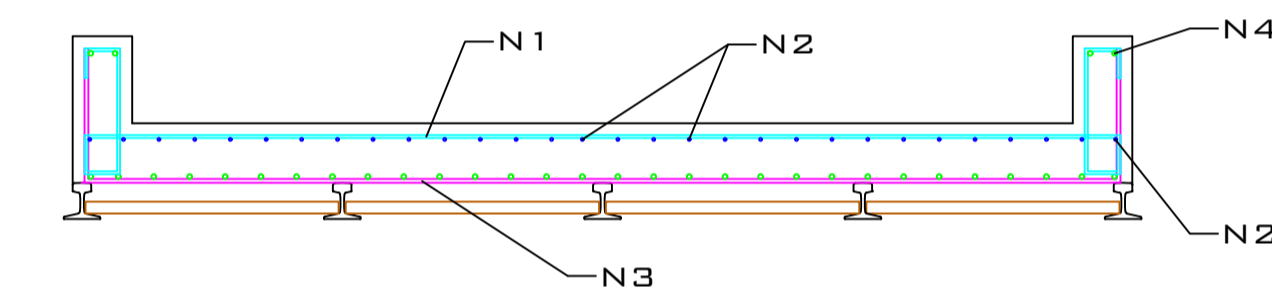
B5  
2x 8 N7 Ø 16,0MM - B5



10  
22  
22  
2x 24 N5 Ø 10,0MM c/ 15cm - 10B





390  
30 N2 Ø 10,0MM c/ 12cm - 390



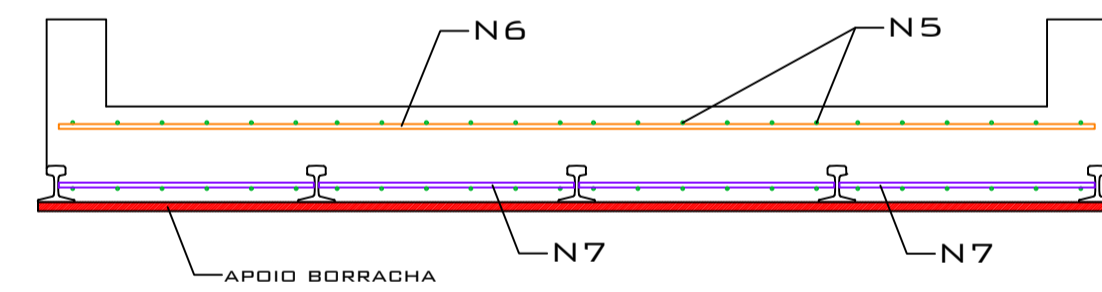
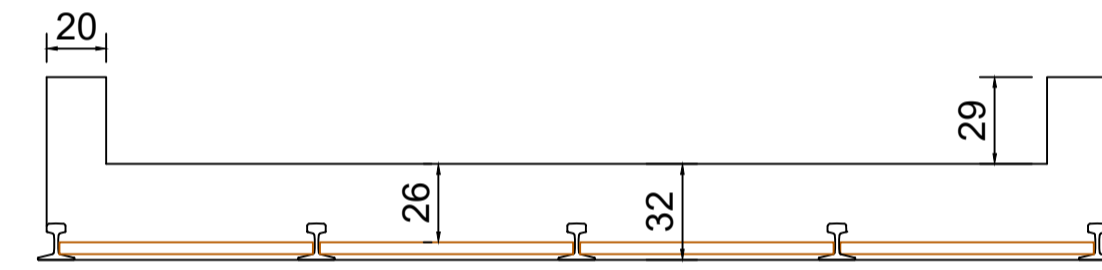
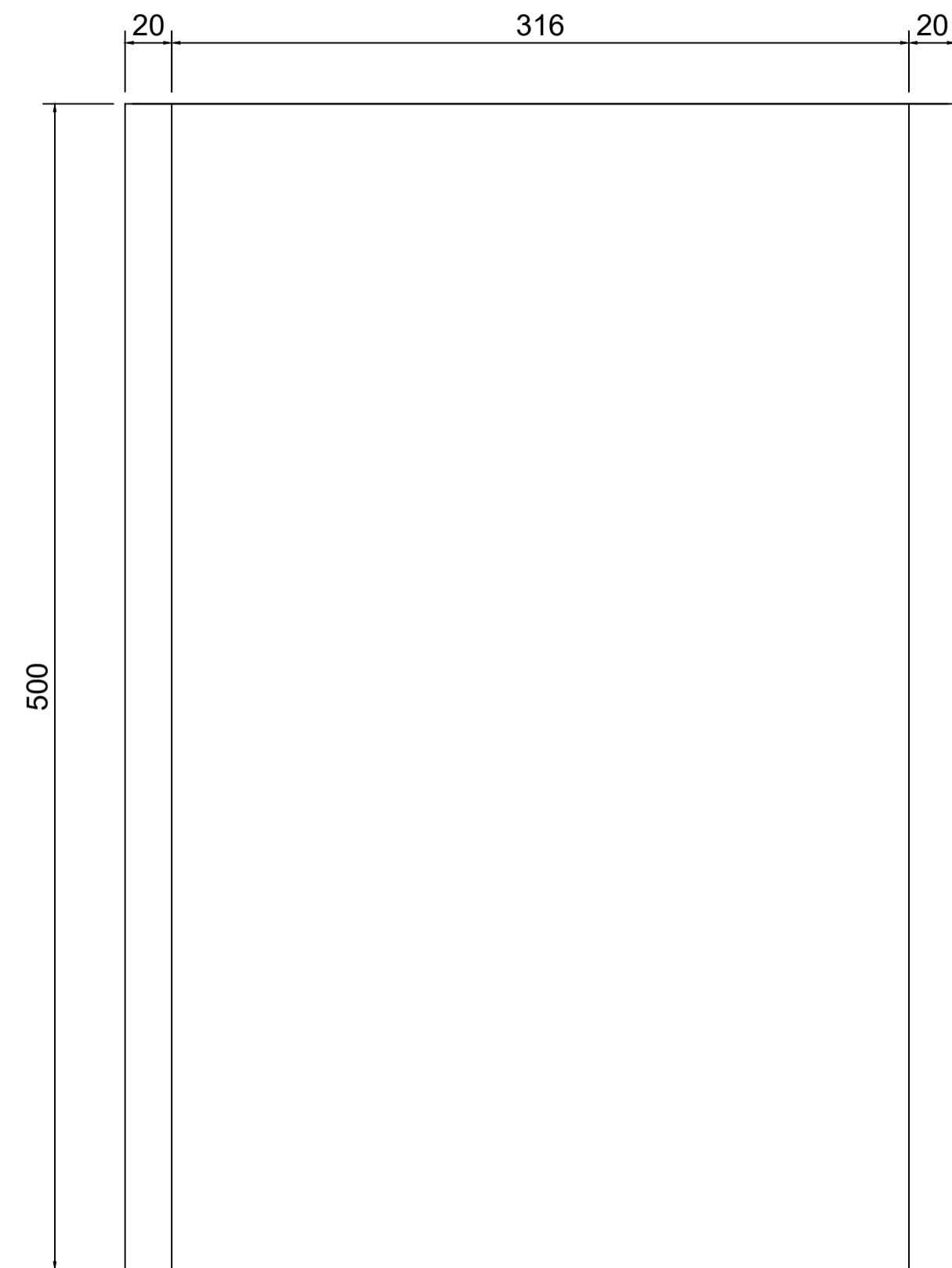
390  
34 N4 Ø 16,0MM c/ 12cm - 390

	Ø	QTADE	COMP.	COMP TOTAL	KG	KG + 10%
N1	10	28	526	14728	90,9	100,0
N2	10	30	390	11700	72,2	79,4
N3	12,5	28	438	12264	118,1	129,9
N4	16	34	390	13260	209,2	230,2
N5	10	48	108	5184	32,0	35,2
N6	16	4	348	1392	22,0	24,2
N7	16	16	85	1360	21,5	23,6

CONCRETO 30 Mpa = 5,04 m³

Projeto <b>PONTE INTERIOR - CERRO AZUL</b>		Referência LAJE/TABLADO PONTE CERRO AZUL	FOLHA <b>PT07</b>
	Localização: 26°44'39.48"S - 51° 5'20.04"O	Revisões	Data 13 julho 2020
	Revisões	REVISÃO DO PROJETO	
Responsável Técnico	Área	Escala 1:40	
Desenho EMERSON	Arquivo D:\Prefeitura\ Ponte Interior\Pontes 2020\PONTE SÃO PEDRO 2.dwg		

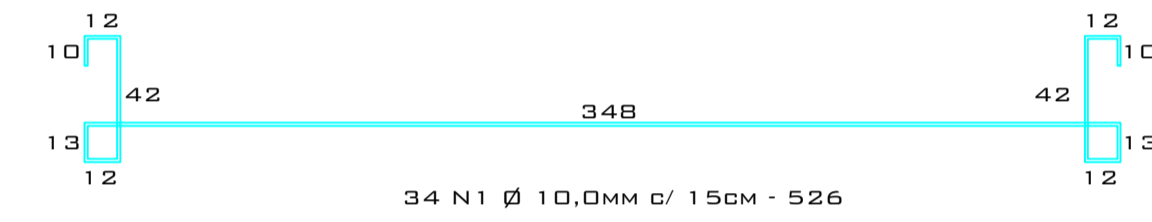
# CACHOEIRINHA



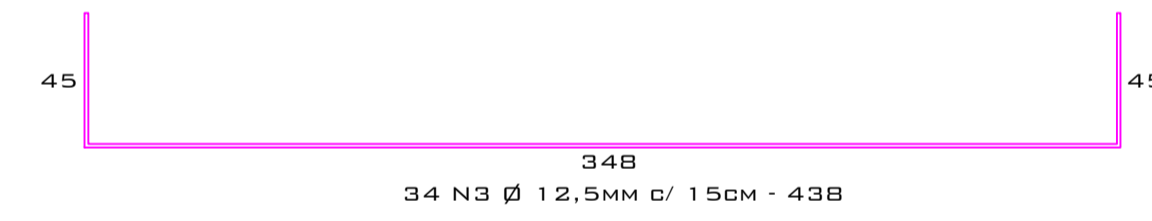
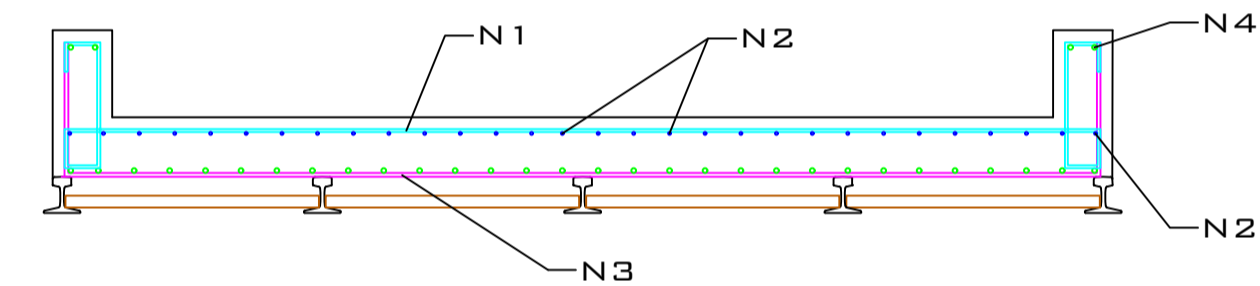
348  
2x 2 N6 Ø 16,0MM - 348

10  
22  
22  
2x 24 N5 Ø 10,0MM c/ 15cm - 108

85  
2x 8 N7 Ø 16,0MM - 85





490  
30 N2 Ø 10,0MM c/ 12cm - 490



600  
34 N4 Ø 16,0MM c/ 12cm - 490

	Ø	QTDADE	COMP.	COMP TOTAL	KG	KG + 10%
N1	10	34	526	17884	110,3	121,4
N2	10	30	490	14700	90,7	99,8
N3	12,5	34	438	14892	143,4	157,8
N4	16	34	490	16660	262,9	289,2
N5	10	48	108	5184	32,0	35,2
N6	16	4	348	1392	22,0	24,2
N7	16	16	85	1360	21,5	23,6

CONCRETO 30 Mpa = 6,30 m³

Projeto <b>PONTE INTERIOR - CACHOEIRINHA</b>		Referência LAJE/TABLADO CACHOEIRINHA	FOLHA <b>PT08</b>
		LOCALIZ: 26°45'15.84"S - 50°57'22.68"O	Data 13 julho 2020
		Revisões REVISÃO DO PROJETO	
Responsável Técnico	Área	Desenho EMERSON	Arquivo D:\Prefeitura\ Ponte Interior\Pontes 2020\PONTE SÃO PEDRO 2.dwg