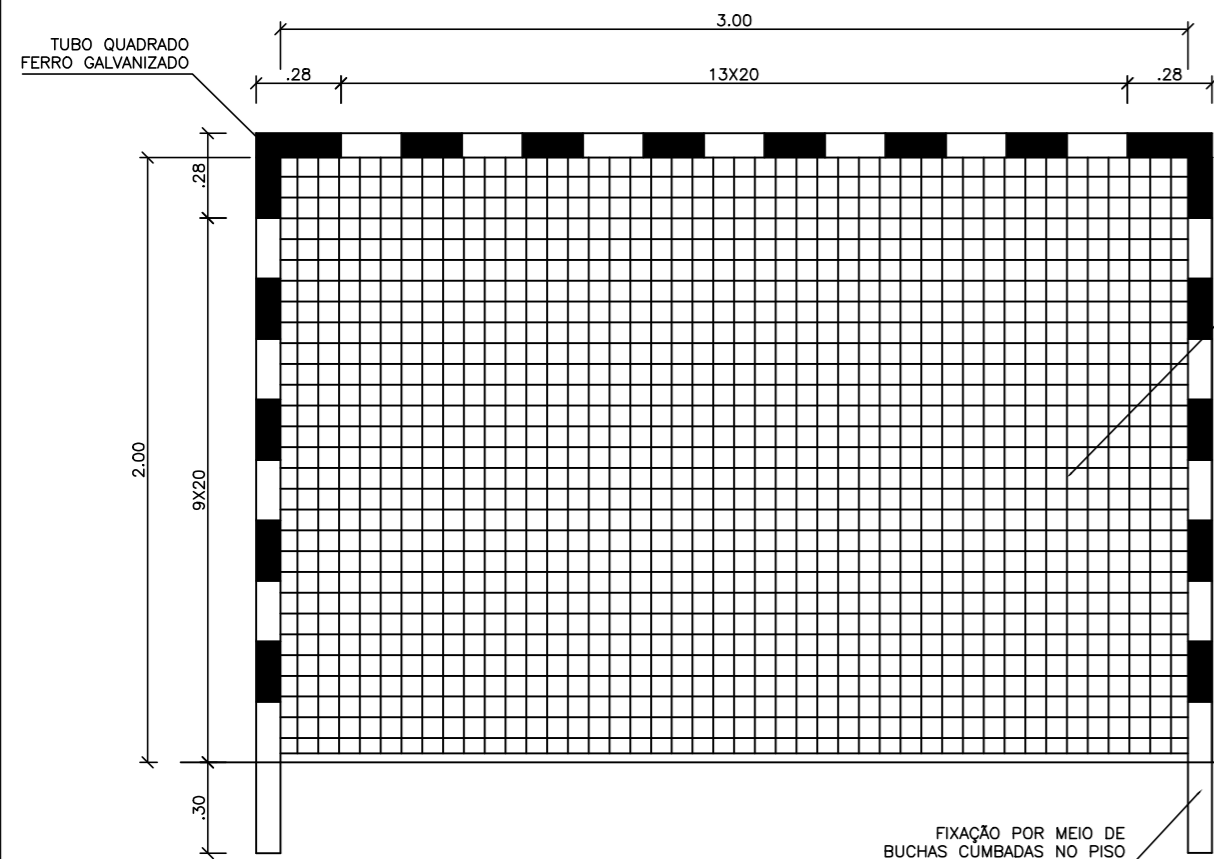


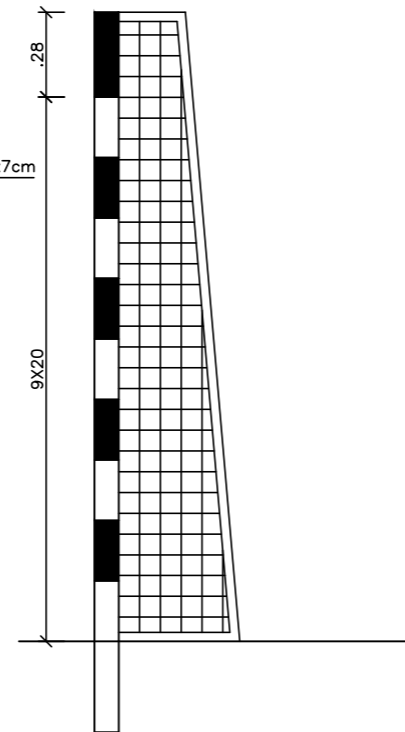
**BALIZA HANDEBOL
PLANTA**

ESCALA 1:25



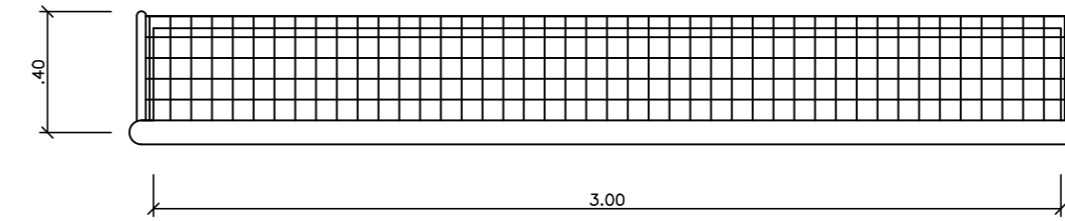
**BALIZA HANDEBOL
VISTA FRONTAL**

ESCALA 1:25



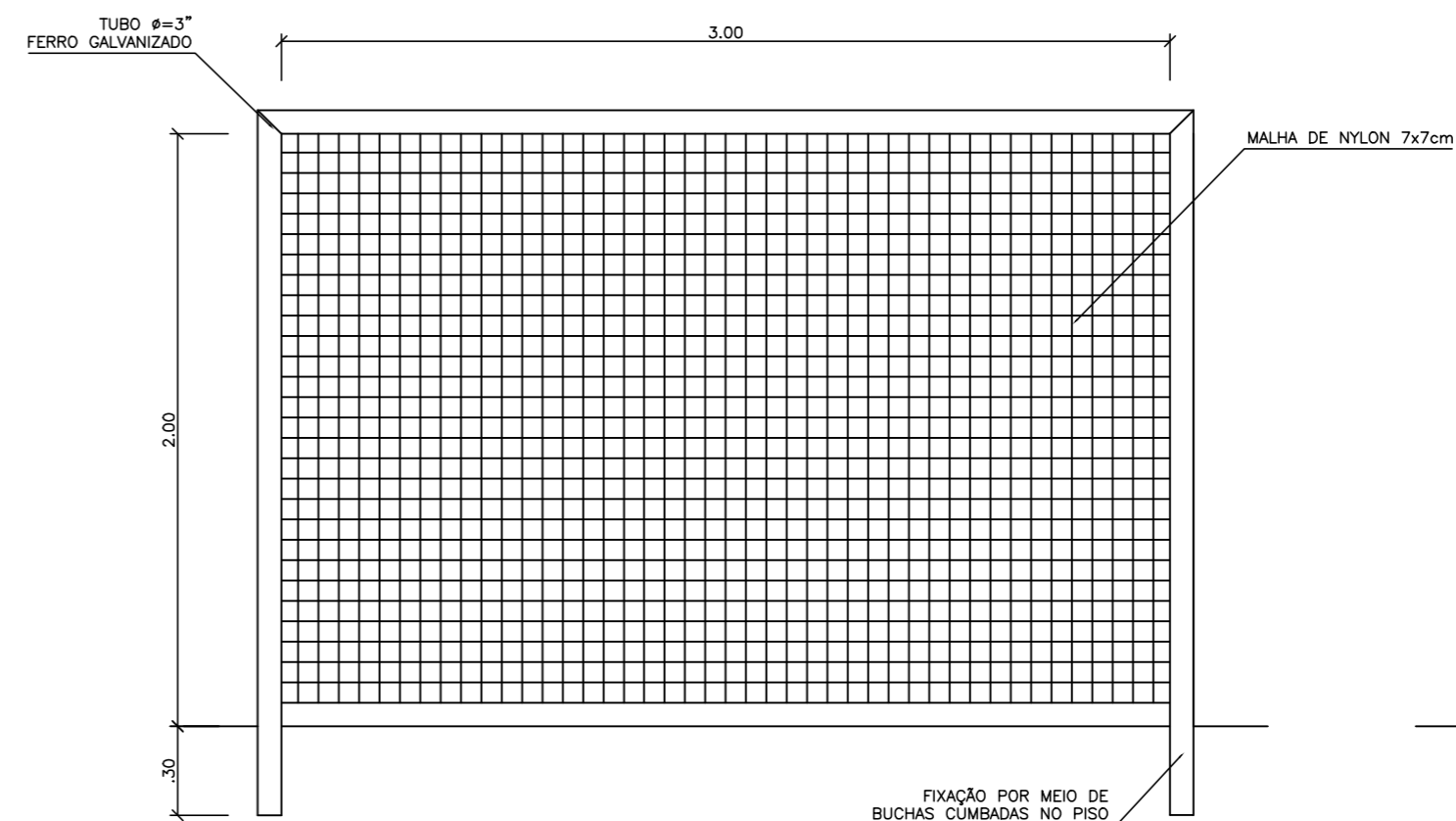
**BALIZA HANDEBOL
VISTA LATERAL**

ESCALA 1:25



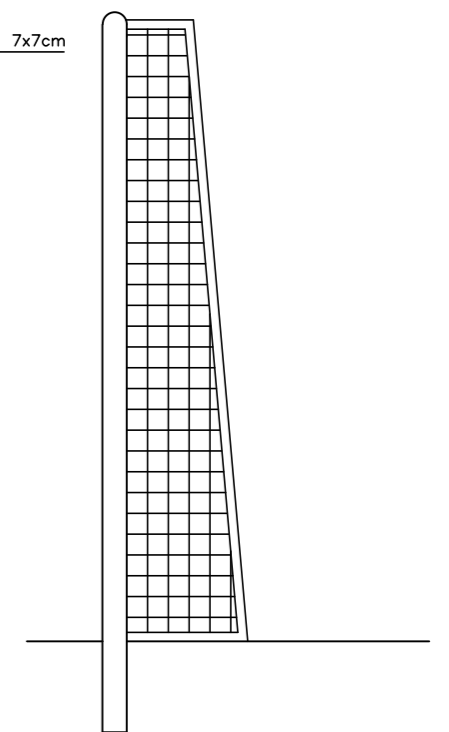
**BALIZA FUTEBOL
PLANTA**

ESCALA 1:25



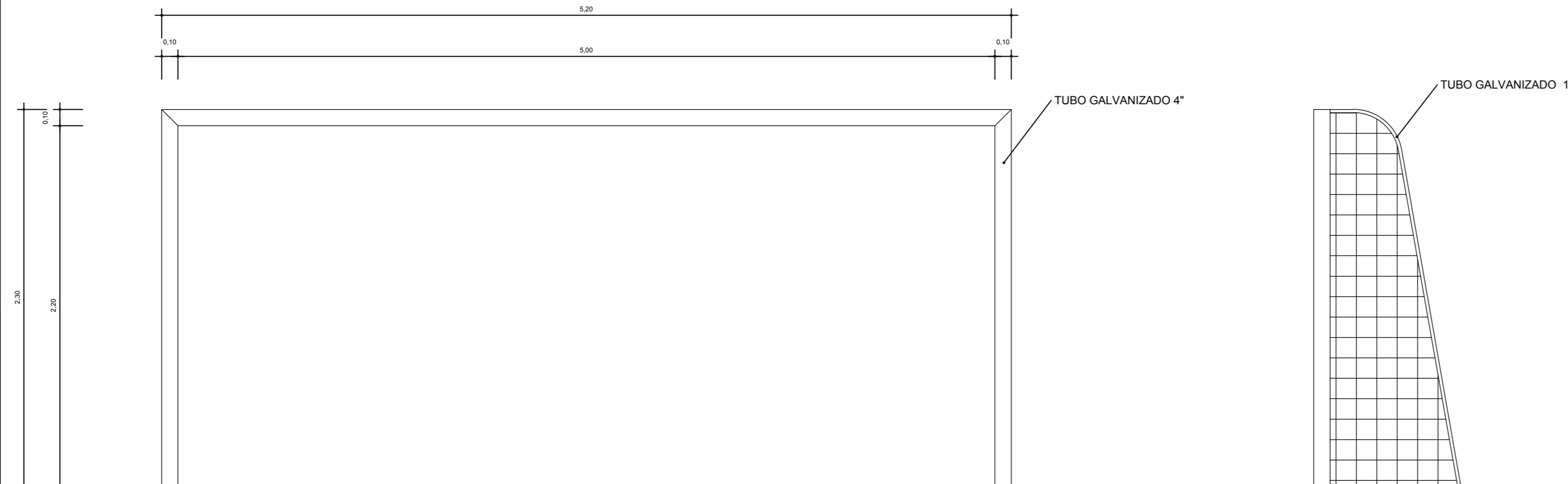
**BALIZA FUTEBOL
VISTA FRONTAL**

ESCALA 1:25





**BALIZA FUTEBOL
VISTA LATERAL**

ESCALA 1:25



DETALHE TRAVE P/ CAMPOS DE FUTEBOL SOCIETY

Escala 1/25

Projeto ARQUITETÔNICO		
 <p>IPPUC INSTITUTO DE PESQUISA E PLANEJAMENTO URBANO DE CAÇADOR</p>	Referência DETALHAMENTO TRAVES	FOLHA 03/03
	Revisões	Data 14 março 2018
Responsável Técnico ENG. CIVIL CARINE MARCON	Área INDICADA	
	Escala INDICADA	
	Desenho DONIZETE/CARINE	
	Arquivo C:\Carine\IPPUC\Projetos\Quintal Social Santa Terezinha\QUADRA POLIESPORTIVA\QUADRA POLIESPORTIVA STA TEREZINHA.dwg	